



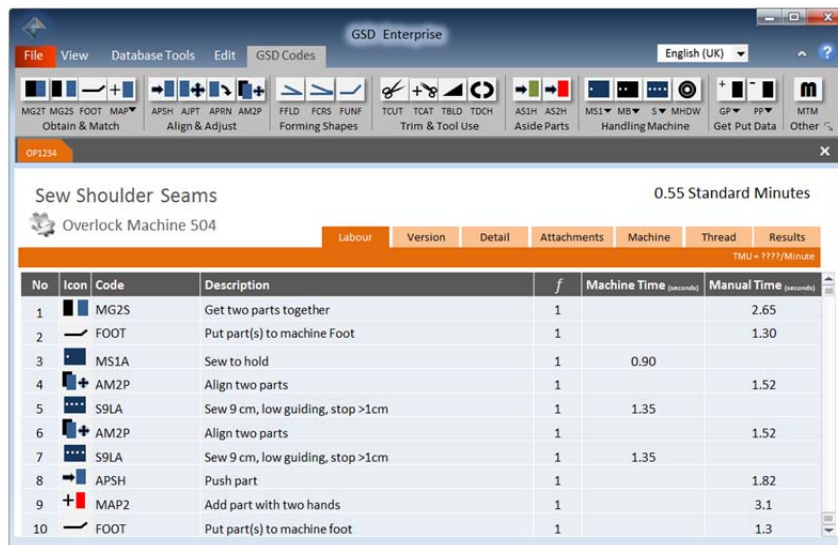
Productivity Improvement  
**Time-Cost Benchmarking**  
 Quality & Compliance

## Enterprise Software

### What is GSD Enterprise?

GSD **Enterprise** is a software solution which, when combined with training and GSD Practitioner accreditation, helps Industrial and Production Engineers establish “**International Standard Time**” for all apparel and sewn products. This scientific process then creates an accurate & consistent **Methods Database** for the business.

At the heart of the software is “GSD”, consisting of codes and times which represent repetitive motion and activities in the workplace. Each code has an associated International Standard Time which establishes GSD Enterprise as the “Predetermined Time Standard” system for apparel and sewn products.



GSD **Enterprise** establishes and benchmarks; method, time, cost and capacity for each product, product feature and each operation in the manufacturing process.



*GSD (Corporate) Ltd. received The Queen's Award for Enterprise - International Trade (2009), the UK's most prestigious Award for business performance, recognizing outstanding achievement by UK companies*

### Engineering Challenges

*Shorter production runs, greater style variation, smaller margins and price pressure render traditional time quantification techniques inadequate. In a changing and competitive environment companies must be innovative and efficient and a new approach is essential.*

### Enterprise Elements

*GSD Enterprise is comprehensive software suite that facilitates a variety of functions vital in a modern business environment:*

- Product Costing
- Bill of Labour
- Thread Consumption
- Pre-Production Planning
- Line Balancing

### Methods Database

*GSD Enterprise establishes an accurate and consistent database of manufacturing methods relevant to a given environment and product range. The secure database helps to protect and preserve the company's critical manufacturing data from the unwanted effects of labor and staff turnover.*

### The Enterprise Solution

*A complete installation may include...*

- GSD PTS Company License
- GSD Enterprise Software
- On site Implementation & Training
- GSD QED Standard Method Libraries
- Customised Method Libraries